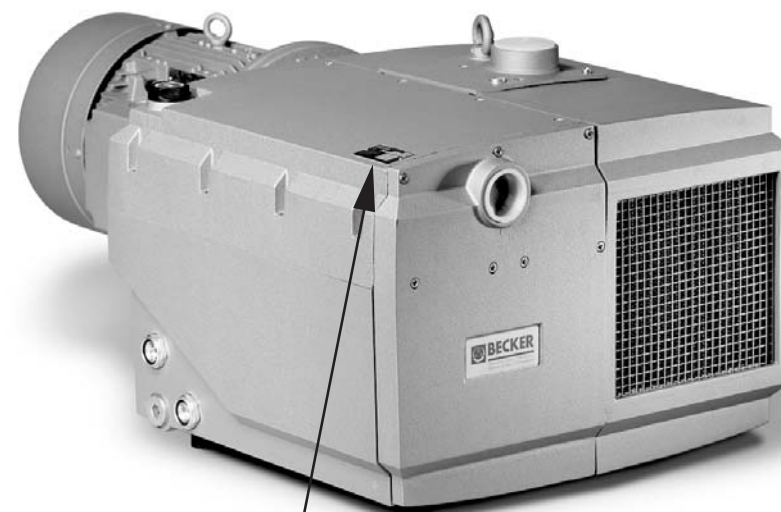


| Wartung Maintenance Entretien Manutenzione Mantenimiento | | | | |
|---------------------------------------------------------------------------------------------------------|------|---------------------------------------------------------------------|----------------------------------------------------------------------------------------|-------------------------------------------------------------------------------------------------------------------------------|
| | | | | |
| | Pos. | Menge ²⁾ Quantity Quantité Quantità Cantidad | Bestell-Nr. Ident No. No. Identification No. Identificazione No. de pedido | Bezeichnung Description Designation Designazione Descripción |
| U 4.100 | ■ | 1 | 549000 26100 | Dichtungssatz, Complete set of seals, Jeu de joints, Kit di guarnizioni, Junta Completa |
| | 5 | SATZ (KIT) | 900512 00003 | Schieber, Rotor Vane, Palette, Silenciador |
| | 83 | 1 | 965416 00000 | Luftentölelement, Oil separating element, Element separation huile, Cartuccia separatore olio, Elemento de desaceitar de aire |

²⁾ erforderliche Bestellmenge / necessary order quantity / quantité nécessaire / quantità di ordinazione necessari / cantidad necesario



28006900000 06/2010

Index-F

| | | |
|-----------------------|-----------------------------------------------------------------------------------------------------------------------------------------------------------------------------------------------------------------------------------------------------------------------------------------------------------------------------------------------------------------------------------|-------------------------------------------------------------------------------------------------------------------------------------------------------------------------|
| <p>SERVICE</p> | | <p>Index Option</p> |
| | <p>Made in Germany</p> <p>BECKER</p> <p>Baujahr/year: XXXX</p> <p>No. F-XXXXXX</p> <p>D-42279 Wuppertal</p> <p>Typ U 4.100-XX</p> <p>Drehzahl / speed: XXXX min⁻¹</p> <p>Leistungsbedarf / motor power required: XXXX kW</p> <p>Saugvermögen / inlet capacity: XXXX m³/h</p> <p>Saugdruck / vacuum: XXXX mbar</p> <p><small>www.bf-1.com</small></p> | <p>Service:</p> <p>Tel: +49 (0)202 697-171</p> <p>Fax: +49 (0)202 64 44 74</p> <p>E-Mail: info@becker-international.com</p> <p> www.becker-international.com</p> |



U 4.100

| Pos. | Bestell Nr. | Beschreibung |
|------|--------------|-------------------------------------------|
| □ | 549000 26100 | DICHTUNGSSATZ ¹⁾ |
| 1 | 000101 26200 | GEHÄUSE |
| 3 | 020000 26200 | KOLBEN |
| 5 | 900512 00003 | SCHIEBER (SATZ) |
| 7 | 917609 00000 | LAGERDICHTRING |
| 8 | 917501 00000 | PASS-SCHEIBE |
| 9 | 906622 00000 | WÄLZLAGER |
| 10 | 906528 00000 | WELLENDICHTRING |
| 11 | 948207 00000 | SEEGERRING |
| 12 | 912820 00000 | VERSCHLUSSDECKEL |
| 15 | 000801 26200 | SEITENDECKEL |
| 16 | 000701 26200 | SEITENDECKEL |
| 17 | 912871 00000 | VERSCHLUSS-SCHRAUBE |
| 18 | 902000 10600 | GEBLÄSEKUPPLUNG |
| 21 | 945320 00000 | INNENSECHSKANTSCHRAUBE |
| 22 | 948742 00000 | PASSKERBSTIFT |
| 24 | 947732 00000 | PASSFEDER |
| 28 | 952008 00000 | SPANNHÜLSE |
| 29 | 951705 00000 | TELLERFEDER |
| 30 | 902300 26200 | VENTILATOR MIT NABE |
| 31 | 947713 00000 | PASSFEDER |
| 32 | 901808 00000 | WELLENENDSCHRAUBE |
| 33 | 947507 00000 | UNTERLEGSCHEIBE |
| 41 | 007800 26200 | GEWINDEFLANSCH |
| 42 | 533900 26200 | VENTILPLATTE, KOMPLETT |
| 44 | 005000 26200 | SIEB |
| 46 | 948219 02000 | SEEGER-RING |
| 49 | 928602 60000 | DRUCKFEDER |
| 52 | 945325 00000 | INNENSECHSKANTSCHRAUBE |
| 54 | 951602 00000 | RINGMÜTTER |
| 55 | 945814 00000 | GEWINDESTIFT |
| 57 | 951228 02000 | VERSCHLUSS-SCHRAUBE |
| 63 | 509400 26200 | KUGELSTÜCKSCHRAUBE |
| 64 | 001702 26200 | ÖLBEHÄLTERDECKEL |
| 67 | 003701 26200 | DECKEL |
| 69 | 951005 02000 | STIFTSCHRAUBE |
| 70 | 948504 00000 | TELLERFEDER |
| 71 | 917113 00000 | SECHSKANTMÜTTER |
| 74 | 305800 02000 | ÜBERWURFMÜTTER |
| 76 | 727502 99628 | ABBLASEVENTIL |
| 83 | 965416 00000 | LUFENTÖLELEMENT (1x) ²⁾ |
| 89 | 921500 50000 | HANDGRIFF |
| 93 | 945226 00000 | SECHSKANTSCHRAUBE |
| 94 | 867800 99559 | SCHWIMMER |
| 97 | 912300 00000 | ANSCHLUSSCHRAUBE |
| 98 | 912871 00000 | VERSCHLUSS-SCHRAUBE |
| 101 | 506000 26200 | GROBABSCHIEDER KOMPLETT |
| 104 | 008001 26200 | FILTERBLECH |
| 112 | 003703 26200 | DECKEL |
| 120 | 916800 10000 | SCHRAUBDECKEL |
| 130 | 945387 00000 | INNENSECHSKANTSCHRAUBE |
| 131 | 945319 00000 | INNENSECHSKANTSCHRAUBE |
| 132 | 945323 00000 | INNENSECHSKANTSCHRAUBE |
| 133 | 945319 00000 | INNENSECHSKANTSCHRAUBE |
| 134 | 945324 00000 | INNENSECHSKANTSCHRAUBE |
| 141 | 012211 26200 | LEITUNG |
| 143 | 012202 26200 | LEITUNG |
| 148 | 948401 00000 | HOHLSCHRAUBE |
| 150 | 012209 26200 | LEITUNG |
| 151 | 012205 26200 | LEITUNG |




U 4.100

| Pos. | Bestell Nr. | Beschreibung |
|------|--------------|-------------------------------|
| 152 | 009400 19000 | KUGELSTÜCKSCHRAUBE |
| 154 | 012900 19000 | VERSCHLUSS-SCHRAUBE |
| 157 | 960202 26200 | KÜHLER |
| 158 | 012210 26200 | LEITUNG |
| 159 | 948402 00000 | HOHLSCHRAUBE |
| 181 | 018300 26200 | ABDECKHAUBE |
| 183 | 922400 60000 | SCHUTZGITTER |
| 186 | 568001 10700 | ZWISCHENSTÜCK |
| 187 | 568100 10700 | STÜTZE KOMPL. |
| 188 | 949408 00000 | U-SCHEIBE |
| 190 | 001800 20000 | WELLENABSCHLUSS-SCHRAUBE |
| 192 | 901809 00000 | SCHRAUBE |
| 193 | 949451 00000 | U-SCHEIBE |
| 197 | 741310 60000 | GUMMIPUFFER |
| 214 | 950700 10000 | LÜSTERKLEMME |
| 215 | 946304 00000 | SCHRAUBE |
| 216 | 943400 90000 | TEMPERATURFÜHLER |
| 233 | 537500 10700 | VENTIL, KOMPL. |
| 242 | 902101 10600 | MOTORKUPPLUNGSHÄLFTE Ø28MM |
| 245 | 945117 00000 | SECHSKANTSCHRAUBE |
| 246 | 948507 00000 | FEDERRING |
| 248 | 902200 10600 | KUPPLUNGSRING |
| 250 | 902100 26100 | MOTORKUPPLUNG (US) |
| 251 | 037900 26200 | ZWISCHENFLANSCH (US) |
| 254 | 945232 00000 | SECHSKANTSCHRAUBE (US) |
| 282 | 741103 99682 | NIVEAUGEBER - OPTIONAL |
| 283 | 948086 00000 | DICHTUNG |
| 301 | 002407 26200 | ÖLBEHÄLTER |
| 302 | 013301 26200 | PRALLBLECH |
| 303 | 945211 00000 | SECHSKANTSCHRAUBE |
| 304 | 951221 00100 | VERSCHLUSS-SCHRAUBE |
| 306 | 907309 00000 | ÖLSCHAUGLAS |
| 307 | 951220 00100 | VERSCHLUSS-SSCHRAUBE |
| 310 | 912300 00000 | ANSCHLUSS-SCHRAUBE |
| 311 | 912305 00000 | ANSCHLUSS-SCHRAUBE |
| 312 | 912306 00000 | ANSCHLUSS-SCHRAUBE |
| 314 | 003300 10700 | DÜSE |
| 318 | 952005 00000 | SPANNHÜLSE |

¹⁾ Dichtungssatz - 54900026100 - Pos.: 25, 26, 37, 38, 47, 58, 77, 79, 80, 121, 129, 149, 153, 160, 308

OPTIONAL

| | |
|-------------------------|------------------------------------------------------------------|
| U 4.100 SA/K -25 | Sonderausführung - mit Öl-Wasser-Kühler |
| -51 | Sonderausführung - mit Ölbadheizung, Niveau-Geber und Thermostat |
| -54 | Sonderausführung - mit zusätzlicher Ölblassebohrung |
| -58 | Sonderausführung (Ventilator) |
| U 4.100 F | Sonderausführung - ohne Kühler |
| U 4.100 F/K -25 | Sonderausführung - mit Öl-Wasser-Kühler |
| -51 | Sonderausführung - mit Ölbadheizung, Niveau-Geber und Thermostat |
| -58 | Sonderausführung (Ventilator) |

Abweichende Positionen zum Standardgerät - siehe Anhang 

F
Index**U 4.100**

| Pos. | Ident No. | Description |
|------|--------------|--------------------------------------------------|
| □ | 549000 26100 | COMPLETE SET OF SEALS ¹⁾ |
| 1 | 000101 26200 | PUMP BODY |
| 3 | 020000 26200 | ROTOR |
| 5 | 900512 00003 | ROTOR VANE IN PLASTIC (KIT) |
| 7 | 917609 00000 | GASKET |
| 8 | 917501 00000 | DISTANCE DISC |
| 9 | 906622 00000 | BEARING |
| 10 | 906528 00000 | SHAFT SEALING RING |
| 11 | 948207 00000 | SEEGER CIRCLIP |
| 12 | 912820 00000 | CAP |
| 15 | 000801 26200 | SIDE SHIELD |
| 16 | 000701 26200 | SIDE SHIELD |
| 17 | 912871 00000 | LOCKING SCREW |
| 18 | 902000 10600 | COUPLING PUMP |
| 21 | 945320 00000 | HEX HEAD SCREW |
| 22 | 948742 00000 | GROOVED PIN |
| 24 | 947732 00000 | KEY |
| 28 | 952008 00000 | LOCATING PEG |
| 29 | 951705 00000 | SPRING DISC |
| 30 | 902300 26200 | FAN |
| 31 | 947713 00000 | KEY |
| 32 | 901808 00000 | SHAFT END BOLD |
| 33 | 947507 00000 | WASHER |
| 41 | 007800 26200 | FLANGE |
| 42 | 533900 26200 | VALVE PLATE |
| 44 | 005000 26200 | SIEVE |
| 46 | 948219 02000 | LOCKING RING |
| 49 | 928602 60000 | PRESSURE SPRING |
| 52 | 945325 00000 | SOCKET HEAD SCREW |
| 54 | 951602 00000 | RING UNIT |
| 55 | 945814 00000 | THREADED PIN |
| 57 | 951228 02000 | LOCKING SCREW |
| 63 | 509400 26200 | HOLLOW HOLDING SCREW |
| 64 | 001702 26200 | OIL TANK COVER |
| 67 | 003701 26200 | COVER |
| 69 | 951005 02000 | STUD |
| 70 | 948504 00000 | SPRING COLLAR |
| 71 | 917113 00000 | HEX.NUT |
| 74 | 305800 02000 | COUPLING NUT |
| 76 | 727502 99628 | BLOW-OFF VALVE |
| 83 | 965416 00000 | OIL SEPARATING ELEMENT (1x) ²⁾ |
| 89 | 921500 50000 | HANDLE |
| 93 | 945226 00000 | HEX. HEAD SCREW |
| 94 | 867800 99559 | FLOAT |
| 97 | 912300 00000 | CONNECTING SCREW |
| 98 | 912871 00000 | LOCKING SCREW |
| 101 | 506000 26200 | COARSE SEPARATOR |
| 104 | 008001 26200 | SCREEN |
| 112 | 003703 26200 | COVER |
| 120 | 916800 10000 | COVER |
| 130 | 945387 00000 | SOCKET HEAD SCREW |
| 131 | 945319 00000 | SOCKET HEAD SCREW |
| 132 | 945323 00000 | SOCKET HEAD SCREW |
| 133 | 945319 00000 | SOCKET HEAD SCREW |
| 134 | 945324 00000 | SOCKET HEAD SCREW |
| 141 | 012211 26200 | PIPE |
| 143 | 012202 26200 | PIPE |
| 148 | 948401 00000 | HOLLOW SCREW |
| 150 | 012209 26200 | PIPE |
| 151 | 012205 26200 | PIPE |

**F**
Index**U 4.100**

| Pos. | Ident No. | Description |
|------|--------------|-------------------------------------|
| 152 | 009400 19000 | HOLLOW HOLDING SCREW |
| 154 | 012900 19000 | LOCKING SCREW |
| 157 | 960202 26200 | COOLER |
| 158 | 012210 26200 | PIPE |
| 159 | 948402 00000 | HOLLOW SCREW |
| 181 | 018300 26200 | COVERING HOOD |
| 183 | 922400 60000 | PROTECTIVE SHEET |
| 186 | 568001 10700 | INTERMEDIATE PIECE |
| 187 | 568100 10700 | SUPPORT PILLAR |
| 188 | 949408 00000 | WASHER |
| 190 | 001800 20000 | SCREW |
| 192 | 901809 00000 | SCREW |
| 193 | 949451 00000 | WASHER |
| 197 | 741310 60000 | RUBBER BUFFER |
| 214 | 950700 10000 | CLAMP |
| 215 | 946304 00000 | HEX-HEAD SCREW |
| 216 | 943400 90000 | TEMPERATURE PROBE |
| 233 | 537500 10700 | VALVE |
| 242 | 902101 10600 | COUPLING MOTOR SIDE Ø28MM |
| 245 | 945117 00000 | HEX-HEAD SCREW |
| 246 | 948507 00000 | SPRING WASHER |
| 248 | 902200 10600 | GEAR RIM |
| 250 | 902100 26100 | COUPLING MOTOR SIDE (US) |
| 251 | 037900 26200 | FLANGES (US) |
| 254 | 945232 00000 | HEX-HEAD SCREW (US) |
| 282 | 741103 99682 | OIL LEVEL CONTROL - OPTIONAL |
| 283 | 948086 00000 | GASKET |
| 301 | 002407 26200 | OIL TANK |
| 302 | 013301 26200 | DEFLECTING PLATE |
| 303 | 945211 00000 | HEX-HEAD SCREW |
| 304 | 951221 00100 | LOCKING SCREW |
| 306 | 907309 00000 | OIL SIGHT GLASS |
| 307 | 951220 00100 | LOCKING SCREW |
| 310 | 912300 00000 | CONNECTING SCREW |
| 311 | 912305 00000 | CONNECTING SCREW |
| 312 | 912306 00000 | CONNECTING SCREW |
| 314 | 003300 10700 | NOZZLE |
| 318 | 952005 00000 | LOCATING PEG |

¹⁾ Set of seals - 54900026100 - Pos.: 25, 26, 37, 38, 47, 58, 77, 79, 80, 121, 129, 149, 153, 160, 308²⁾ necessary order quantity / maintenance**OPTIONAL**

| | |
|-------------------------|--------------------------------------------------------------------------|
| U 4.100 SA/K -25 | Special design – with oil-to-water heat exchanger |
| -51 | Special design – with oil bath heating, level transmitter and heat valve |
| -54 | Special design – with additional oil draining bore hole |
| -58 | Special design (Fan) |
| U 4.100 F | Special design – without cooling apparatus |
| U 4.100 F/K -25 | Special design – with oil-to-water heat exchanger |
| -51 | Special design – with oil bath heating, level transmitter and heat valve |
| -58 | Special design (Fan) |

Items different from standard appliance see appendix (back of drawing) 

F
Index**U 4.100**

| Pos. | No. Identification | Designation |
|------|--------------------|----------------------------------------------------|
| □ | 549000 26100 | JEU DE JOINTS ¹⁾ |
| 1 | 000101 26200 | CARCASSE |
| 3 | 020000 26200 | PISTON |
| 5 | 900512 00003 | PALETTE ON PLASTIQUE (KIT) |
| 7 | 917609 00000 | JOINT |
| 8 | 917501 00000 | DISQUE DE TOLERANCE |
| 9 | 906622 00000 | ROULEMENT |
| 10 | 906528 00000 | BAGUE D'ETANCHEITE |
| 11 | 948207 00000 | FREIN D'AXES SEEGER |
| 12 | 912820 00000 | COUVERCLE |
| 15 | 000801 26200 | COUVERCLE |
| 16 | 000701 26200 | COUVERCLE |
| 17 | 912871 00000 | BOUCHON |
| 18 | 902000 10600 | ACCOUPEMENT POMPE |
| 21 | 945320 00000 | VIS HEXAGONALE INTERNE |
| 22 | 948742 00000 | GOUPILLE CANNELEE |
| 24 | 947732 00000 | CLAVETTE |
| 28 | 952008 00000 | DOVILLE DE ETRAGE |
| 29 | 951705 00000 | DISQUE DE RESSORT |
| 30 | 902300 26200 | VENTILATEUR |
| 31 | 947713 00000 | CLAVETTE |
| 32 | 901808 00000 | VIS BOUT D'ARBRE |
| 33 | 947507 00000 | RONDELLE |
| 41 | 007800 26200 | BRIDE |
| 42 | 533900 26200 | CLAPET |
| 44 | 005000 26200 | FILTRE |
| 46 | 948219 02000 | BAGUE DE SURETE |
| 49 | 928602 60000 | RESSORT DE PRESSION |
| 52 | 945325 00000 | VIS HEXAGONALE INTERNE |
| 54 | 951602 00000 | ECROU A ANNEAU |
| 55 | 945814 00000 | GOUPILLE FILETEE |
| 57 | 951228 02000 | BOUCHON |
| 63 | 509400 26200 | VIS CREUSE DE FIXATION |
| 64 | 001702 26200 | COUVERCLE RESERVOIR D'HUILE |
| 67 | 003701 26200 | COUVERCLE |
| 69 | 951005 02000 | PRISONNIER |
| 70 | 948504 00000 | RONDELLE À RESSORT |
| 71 | 917113 00000 | ECROU A 6PANS |
| 74 | 305800 02000 | ECROU |
| 76 | 727502 99628 | SILENCIEUX |
| 83 | 965416 00000 | ELEMENT SEPARATION HUILE (1x) ²⁾ |
| 89 | 921500 50000 | POIGNEE |
| 93 | 945226 00000 | VIS HEXAGONALE |
| 94 | 867800 99559 | PIED CAOUTCHOVE |
| 97 | 912300 00000 | VIS DE RACCORD |
| 98 | 912871 00000 | BOUCHON |
| 101 | 506000 26200 | SEPARATEUR A GROS |
| 104 | 008001 26200 | TAMIS |
| 112 | 003703 26200 | COUVERCLE |
| 120 | 916800 10000 | COUVERCLE |
| 130 | 945387 00000 | VIS HEXAGONALE INTERNE |
| 131 | 945319 00000 | VIS HEXAGONALE INTERNE |
| 132 | 945323 00000 | VIS HEXAGONALE INTERNE |
| 133 | 945319 00000 | VIS HEXAGONALE INTERNE |
| 134 | 945324 00000 | VIS HEXAGONALE INTERNE |
| 141 | 012211 26200 | TUYAU |
| 143 | 012202 26200 | TUYAU |
| 148 | 948401 00000 | VIS CREUSE |
| 150 | 012209 26200 | TUYAU |
| 151 | 012205 26200 | TUYAU |

F
Index**U 4.100**

| Pos. | No. Identification | Designation |
|------|--------------------|-----------------------------------------|
| 152 | 009400 19000 | VIS CREUSE DE FIXATION |
| 154 | 012900 19000 | BUCHON |
| 157 | 960202 26200 | REFROIDISSEUR |
| 158 | 012210 26200 | TUYAU |
| 159 | 948402 00000 | VIS CREUSE |
| 181 | 018300 26200 | CARTER |
| 183 | 922400 60000 | TOLE DE PROTECTION |
| 186 | 568001 10700 | BRIDE |
| 187 | 568100 10700 | SUPPORT INTERMEDIAIRE |
| 188 | 949408 00000 | RONDELLE |
| 190 | 001800 20000 | VIS |
| 192 | 901809 00000 | VIS |
| 193 | 949451 00000 | RONDELLE |
| 197 | 741310 60000 | AMORTISSEUR EN CAOUTCHOUC |
| 214 | 950700 10000 | BORNE |
| 215 | 946304 00000 | VIS HEXAGONALE |
| 216 | 943400 90000 | PALPEUR DE TEMPERATURE |
| 233 | 537500 10700 | SOUPAPE |
| 242 | 902101 10600 | ACCOUPEMENT MOTEUR Ø28MM |
| 245 | 945117 00000 | VIS HEXAGONALE |
| 246 | 948507 00000 | ANNEAU RESSORT |
| 248 | 902200 10600 | ACCOUPEMENT ROTEX |
| 250 | 902100 26100 | ACCOUPEMENT MOTEUR (US) |
| 251 | 037900 26200 | BRIDES (US) |
| 254 | 945232 00000 | VIS HEXAGONALE (US) |
| 282 | 741103 99682 | INDICATEUR DE NIVEAU - EN OPTION |
| 283 | 948086 00000 | JOINT |
| 301 | 002407 26200 | RESERVOIR D'HUILE |
| 302 | 013301 26200 | DEFLECTEUR |
| 303 | 945211 00000 | VIS HEXAGONALE |
| 304 | 951221 00100 | BOUCHON |
| 306 | 907309 00000 | VERRE REGARD |
| 307 | 951220 00100 | BOUCHON |
| 310 | 912300 00000 | VIS DE RACCORD |
| 311 | 912305 00000 | VIS DE RACCORD |
| 312 | 912306 00000 | VIS DE RACCORD |
| 314 | 003300 10700 | GICLEUR |
| 318 | 952005 00000 | DOUILLE DE ETRAGE |

¹⁾ Jeu de joints - 54900026100 - Pos.: 25, 26, 37, 38, 47, 58, 77, 79, 80, 121, 129, 149, 153, 160, 308

²⁾ quantité nécessaire / entretien

EN OPTION

| | |
|-------------------------|-------------------------------------------------------------------------------|
| U 4.100 SA/K -25 | Fabrication spéciale – avec réfrigérant à l'huile et à l'eau |
| -51 | Fabrication – avec chauffage du bain d'huile, capteur de niveau et thermostat |
| -54 | Fabrication spéciale – avec trou de vidange d'huile |
| -58 | Fabrication spéciale (ventilateur) |
| U 4.100 F | Fabrication spéciale – sans réfrigérant |
| U 4.100 F/K -25 | Fabrication spéciale – avec réfrigérant à l'huile et à l'eau |
| -51 | Fabrication – avec chauffage du bain d'huile, capteur de niveau et thermostat |
| -58 | Fabrication spéciale (ventilateur) |

Articles divergents vis-à-vis de l'appareil standard, voir annexe (dos du dessin / du plan)

F
Index**U 4.100**

| Pos. | No. Identificazione | Designazione |
|------|---------------------|-----------------------------------------------------|
| □ | 549000 26100 | KIT DI GUARNIZIONI ¹⁾ |
| 1 | 000101 26200 | CARCASSA |
| 3 | 020000 26200 | ROTORE |
| 5 | 900512 00003 | PALETTE IN PLASTICA (KIT) |
| 7 | 917609 00000 | GUARNIZIONE |
| 8 | 917501 00000 | DISCO A DISTANZA |
| 9 | 906622 00000 | CUSCINETTO |
| 10 | 906528 00000 | ANELLO DI TENUTA |
| 11 | 948207 00000 | ANELLO ELASTICO DI SICUREZZA |
| 12 | 912820 00000 | COPERCHIO |
| 15 | 000801 26200 | COPERCHIO |
| 16 | 000701 26200 | COPERCHIO |
| 17 | 912871 00000 | VITE DI CHIUSURA |
| 18 | 902000 10600 | GIUNTO POMPA |
| 21 | 945320 00000 | VITE ESAGONALE INTERNA |
| 22 | 948742 00000 | SPINA INTAGLIATA |
| 24 | 947732 00000 | CHIAVETTA |
| 28 | 952008 00000 | SPINE DI RISCONTRO |
| 29 | 951705 00000 | DISCO A MOLLA |
| 30 | 902300 26200 | VENTILATORE |
| 31 | 947713 00000 | CHIAVETTA |
| 32 | 901808 00000 | VITE DI CHIUSURA ALBERO |
| 33 | 947507 00000 | RONDELLA |
| 41 | 007800 26200 | FLANGIA |
| 42 | 533900 26200 | SUPPORTO VALVOLA |
| 44 | 005000 26200 | FILTRO |
| 46 | 948219 02000 | ANELLO DI SICUREZZA |
| 49 | 928602 60000 | MOLLA DELLA PRESSIONE |
| 52 | 945325 00000 | VITE ESAGONALE INTERNA |
| 54 | 951602 00000 | GOLFARE CON FORO FILETTATO |
| 55 | 945814 00000 | SPINA FILETTATURA |
| 57 | 951228 02000 | VITE DI CHIUSURA |
| 63 | 509400 26200 | VITE PASSAGGIO OLIO |
| 64 | 001702 26200 | COPERCHIO SERBATOIO OLIO |
| 67 | 003701 26200 | COPERCHIO |
| 69 | 951005 02000 | L'ASTA VITE |
| 70 | 948504 00000 | RONDELLA A MOLLA |
| 71 | 917113 00000 | DADO ESAGONALE |
| 74 | 305800 02000 | DADO DI RISVOLTO |
| 76 | 727502 99628 | SILENZIATORE |
| 83 | 965416 00000 | CARTUCCIA SEPARATORE OLIO (1x) ²⁾ |
| 89 | 921500 50000 | MANETTA |
| 93 | 945226 00000 | VITE ESAGONALE |
| 94 | 867800 99559 | GALLEGGIANTE |
| 97 | 912300 00000 | ATTACO FILETTATO |
| 98 | 912871 00000 | VITE DI CHIUSURA |
| 101 | 506000 26200 | SEPARATORE GROSSOLANO |
| 104 | 008001 26200 | STACCIO |
| 112 | 003703 26200 | COPERCHIO |
| 120 | 916800 10000 | COPERCHIO |
| 130 | 945387 00000 | VITE ESAGONALE INTERNA |
| 131 | 945319 00000 | VITE ESAGONALE INTERNA |
| 132 | 945323 00000 | VITE ESAGONALE INTERNA |
| 133 | 945319 00000 | VITE ESAGONALE INTERNA |
| 134 | 945324 00000 | VITE ESAGONALE INTERNA |
| 141 | 012211 26200 | CONDOTTO |
| 143 | 012202 26200 | CONDOTTO |
| 148 | 948401 00000 | VITE ESAGONALE |
| 150 | 012209 26200 | CONDOTTO |
| 151 | 012205 26200 | CONDOTTO |

F
Index**U 4.100**

| Pos. | No. Identificazione | Designazione |
|------|---------------------|---------------------------------|
| 152 | 009400 19000 | VITE PASSAGGIO OLIO |
| 154 | 012900 19000 | VITE DI CHIUSURA |
| 157 | 960202 26200 | RAFFREDDATORE |
| 158 | 012210 26200 | CONDOTTO |
| 159 | 948402 00000 | VITE ESAGONALE |
| 181 | 018300 26200 | CARTER |
| 183 | 922400 60000 | GRIGLIA DI PROTEZIONE |
| 186 | 568001 10700 | FLANGE |
| 187 | 568100 10700 | SUPPORTO |
| 188 | 949408 00000 | RONDELLA |
| 190 | 001800 20000 | VITE |
| 192 | 901809 00000 | VITE |
| 193 | 949451 00000 | RONDELLA |
| 197 | 741310 60000 | AMMORTIZZATORE IN GOMMA |
| 214 | 950700 10000 | MORSETTO |
| 215 | 946304 00000 | VITE ESAGONALE |
| 216 | 943400 90000 | TASTATORE TEMPERATURE |
| 233 | 537500 10700 | VALVOLA |
| 242 | 902101 10600 | GIUNTO MOTORE Ø28MM |
| 245 | 945117 00000 | VITE ESAGONALE |
| 246 | 948507 00000 | ANELLO A MOLLA |
| 248 | 902200 10600 | GIUNTO ROTEX |
| 250 | 902100 26100 | GIUNTO MOTORE (US) |
| 251 | 037900 26200 | FLANGE (US) |
| 254 | 945232 00000 | VITE ESAGONALE (US) |
| 282 | 741103 99682 | SONDA D'OLIO - OPZIONALE |
| 283 | 948086 00000 | GUARNIZIONE |
| 301 | 002407 26200 | SERBATOIO OLIO |
| 302 | 013301 26200 | DEFLETTORE |
| 303 | 945211 00000 | VITE ESAGONALE |
| 304 | 951221 00100 | VITE DI CHIUSURA |
| 306 | 907309 00000 | SPIA LIVELLO OLIO |
| 307 | 951220 00100 | VITE DI CHIUSURA |
| 310 | 912300 00000 | ATTACO FILETTATO |
| 311 | 912305 00000 | ATTACO FILETTATO |
| 312 | 912306 00000 | ATTACO FILETTATO |
| 314 | 003300 10700 | UGELLO |
| 318 | 952005 00000 | SPINE DI RISCONTRO |

¹⁾ Serie di guarnizione - 54900026100 - Pos.: 25, 26, 37, 38, 47, 58, 77, 79, 80, 121, 129, 149, 153, 160, 308

OPZIONALE

| | |
|-------------------------|--------------------------------------------------------------------------------|
| U 4.100 SA/K -25 | Modello speciale - con radiatore ad olio - acqua |
| -51 | Modello - con riscaldamento a bagno d'olio, indicatore di livello e termostato |
| -54 | Modello speciale - con faro di scarico dell'olio aggiuntivo |
| -58 | Modello speciale (ventilatore) |
| U 4.100 F | Modello speciale - senza radiatore |
| U 4.100 F/K -25 | Modello speciale - con radiatore ad olio - acqua |
| -51 | Modello - con riscaldamento a bagno d'olio, indicatore di livello e termostato |
| -58 | Modello speciale (ventilatore) |

Vedere allegato (retro del disegno) per le posizioni divergenti dall'apparecchio

F
Index

U 4.100

| Pos. | No. De pedido | Descripción |
|------|---------------|----------------------------------------------------------|
| □ | 549000 26100 | JUEGO DE JUNTA ¹⁾ |
| 1 | 000101 26200 | CARCASA |
| 3 | 020000 26200 | ÉMBOLO |
| 5 | 900512 00003 | EMPUJADOR DE PLÁSTICO (KIT) |
| 7 | 917609 00000 | ANILLO DE COJINETE DE JUNTA |
| 8 | 917501 00000 | ARANDELA DE AJUSTE |
| 9 | 906622 00000 | COJINETE DE RODAMIENTO |
| 10 | 906528 00000 | ANILLO DE JUNTA DE ÁRBOL |
| 11 | 948207 00000 | ANILLO DE RETENCIÓN ELÁSTICO |
| 12 | 912820 00000 | TAPA DE CIERRE |
| 15 | 000801 26200 | TAPA LATERAL |
| 16 | 000701 26200 | TAPA LATERAL |
| 17 | 912871 00000 | TORNILLO DE CIERRE |
| 18 | 902000 10600 | ACOPLAMIENTO DE SOPLADO |
| 21 | 945320 00000 | TORNILLO HEXAGONAL INTERIOR |
| 22 | 948742 00000 | PASADOR ENTALLADO DE AJUSTE |
| 24 | 947732 00000 | LENGÜETA DE AJUSTE |
| 28 | 952008 00000 | CASQUILLO TENSOR |
| 29 | 951705 00000 | ARANDELA ELÁSTICA |
| 30 | 902300 26200 | ALETA DE VENTILADOR |
| 31 | 947713 00000 | LENGÜETA DE AJUSTE |
| 32 | 901808 00000 | TORNILLO TERMINAL DE ÁRBOL |
| 33 | 947507 00000 | ARANDELA |
| 41 | 007800 26200 | BRIDA ROSCADA |
| 42 | 533900 26200 | PLACA DE VÁLVULA, COMPLETAO |
| 44 | 005000 26200 | CRIBA |
| 46 | 948219 02000 | ANILLO DE ASEGURAMIENTO |
| 49 | 928602 60000 | MUELLE DE COMPRESIÓN |
| 52 | 945325 00000 | TORNILLO HEXAGONAL INTERIOR |
| 54 | 951602 00000 | TUERCA DE CÁNCAMO |
| 55 | 945814 00000 | VARILLA ROSCADA |
| 57 | 951228 02000 | TORNILLO DE CIERRE |
| 63 | 509400 26200 | TORNILLO DE PIEZA ESFÉRICA |
| 64 | 001702 26200 | TAPA DE RECIPIENTE DE ACEITE |
| 67 | 003701 26200 | TAPA |
| 69 | 951005 02000 | ESPÁRRAGO |
| 70 | 948504 00000 | ARANDELA DE APOYO DEL RESORTE |
| 71 | 917113 00000 | TUERCA HEXAGONAL |
| 74 | 305800 02000 | SOBRETUERCA |
| 76 | 727502 99628 | VÁLVULA DE BARRIDO |
| 83 | 965416 00000 | ELEMENTO DE DESACEITAR DE AIRE (1x) ²⁾ |
| 89 | 921500 50000 | EMPUÑADURA |
| 93 | 945226 00000 | TORNILLO DE CABEZA HEXAGONAL |
| 94 | 867800 99559 | FLOTADOR |
| 97 | 912300 00000 | TORNILLO DE EMPALME |
| 98 | 912871 00000 | TORNILLO DE CIERRE |
| 101 | 506000 26200 | SEPARADOR DE SÓLIDOS GRUESOS COMPLETO |
| 104 | 008001 26200 | CHAPA DE FILTRO |
| 112 | 003703 26200 | TAPA |
| 120 | 916800 10000 | TAPA ROSCADA |
| 130 | 945387 00000 | TORNILLO HEXAGONAL INTERIOR |
| 131 | 945319 00000 | TORNILLO HEXAGONAL INTERIOR |
| 132 | 945323 00000 | TORNILLO HEXAGONAL INTERIOR |
| 133 | 945319 00000 | TORNILLO HEXAGONAL INTERIOR |
| 134 | 945324 00000 | TORNILLO HEXAGONAL INTERIOR |
| 141 | 012211 26200 | CONDUCTO |
| 143 | 012202 26200 | CONDUCTO |
| 148 | 948401 00000 | TORNILLO HUECO |
| 150 | 012209 26200 | CONDUCTO |
| 151 | 012205 26200 | CONDUCTO |

F
Index

U 4.100

| Pos. | No. De pedido | Descripción |
|------|---------------|---------------------------------------|
| 152 | 009400 19000 | TORNILLO DE PIEZA ESFÉRICA |
| 154 | 012900 19000 | TORNILLO DE CIERRE |
| 157 | 960202 26200 | REFRIGERADOR |
| 158 | 012210 26200 | CONDUCTO |
| 159 | 948402 00000 | TORNILLO HUECO |
| 181 | 018300 26200 | CAPERUZA DE RECUBRIMIENTO |
| 183 | 922400 60000 | REJILLA DE PROTECCIÓN |
| 186 | 568001 10700 | PIEZA INTERMEDIA |
| 187 | 568100 10700 | APOYO COMPLETO. |
| 188 | 949408 00000 | ARANDELA |
| 190 | 001800 20000 | TORNILLO TERMINAL DE ÁRBOL |
| 192 | 901809 00000 | TORNILLO |
| 193 | 949451 00000 | ARANDELA |
| 197 | 741310 60000 | AMORTIGUADOR DE GOMA |
| 214 | 950700 10000 | TERMINAL DE CABLE |
| 215 | 946304 00000 | TORNILLO DE SUJECIÓN |
| 216 | 943400 90000 | SENSOR DE TEMPERATURA |
| 233 | 537500 10700 | VÁLVULA COMPLETA |
| 242 | 902101 10600 | MITAD DE MOTOR DE ACOPLAMIENTO, Ø28MM |
| 245 | 945117 00000 | TORNILLO DE CABEZA HEXAGONAL |
| 246 | 948507 00000 | ARANDELA DE MUELLE |
| 248 | 902200 10600 | ANILLO DE ACOPLAMIENTO ROJO |
| 250 | 902100 26100 | ACOPLAMIENTO DE MOTOR (US) |
| 251 | 037900 26200 | BRIDA INTERMEDIA (US) |
| 254 | 945232 00000 | TORNILLO DE CABEZA HEXAGONAL (US) |
| 282 | 741103 99682 | GENERADOR DE NIVEL - OPCIONAL |
| 283 | 948086 00000 | JUNTA |
| 301 | 002407 26200 | RECIPIENTE DE ACEITE |
| 302 | 013301 26200 | DEFLECTOR |
| 303 | 945211 00000 | TORNILLO DE CABEZA HEXAGONAL |
| 304 | 951221 00100 | TORNILLO DE CIERRE |
| 306 | 907309 00000 | CRISTAL MIRILLA DE ACEITE |
| 307 | 951220 00100 | TORNILLO DE CIERRE |
| 310 | 912300 00000 | TORNILLO DE EMPALME |
| 311 | 912305 00000 | TORNILLO DE EMPALME |
| 312 | 912306 00000 | TORNILLO DE EMPALME |
| 314 | 003300 10700 | TOBERA |
| 318 | 952005 00000 | CASQUILLO TENSOR |

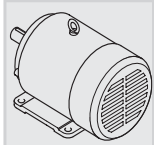
¹⁾ Junta completa - 54900026100 - Pos.: 25, 26, 37, 38, 47, 58, 77, 79, 80, 121, 129, 149, 153, 160, 308

²⁾ cantidad necesario / mantenimiento

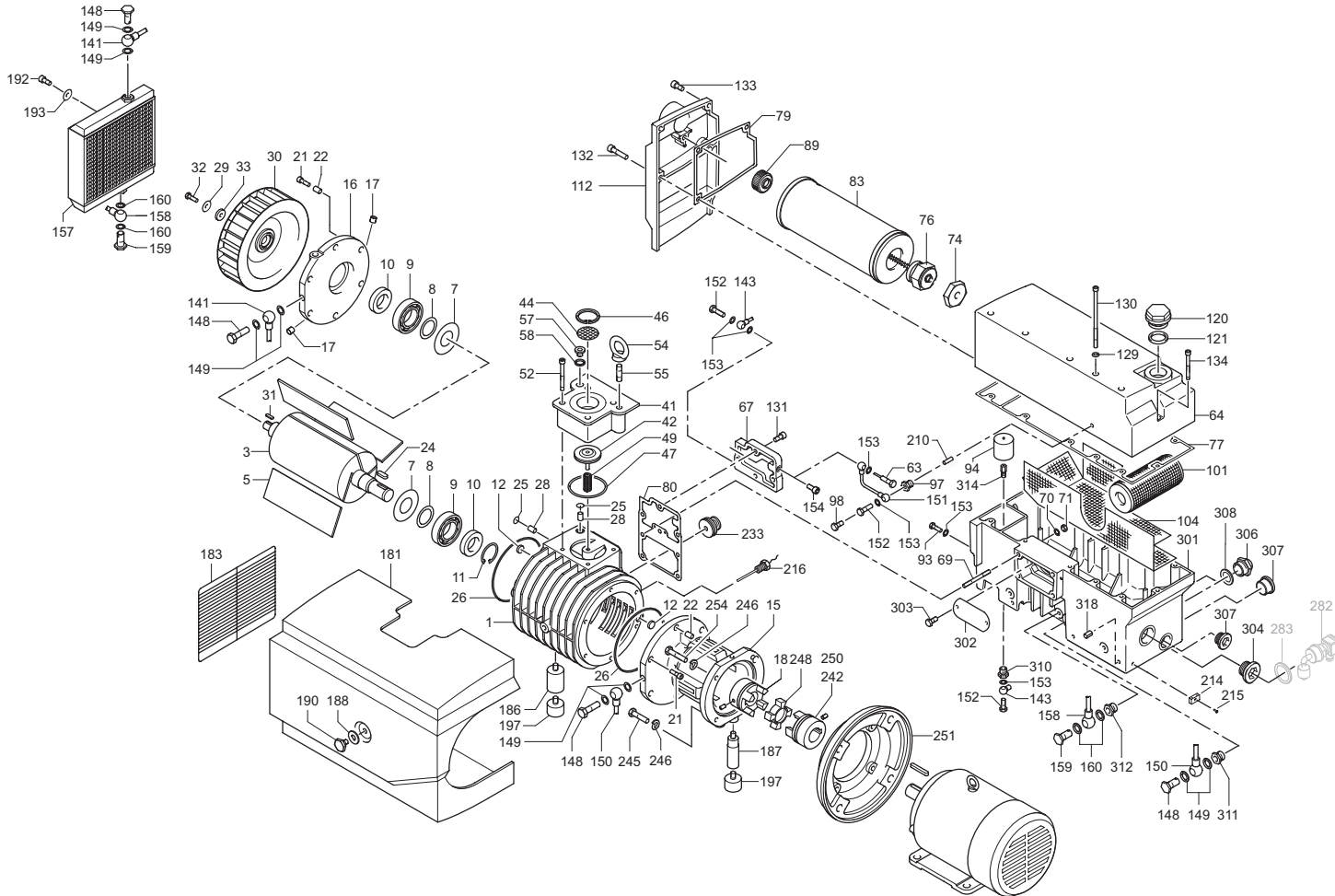
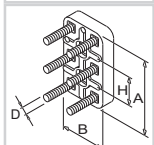
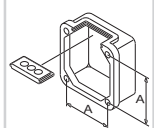
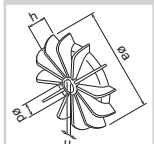
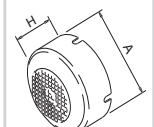
OPCIONAL

- U 4.100 SA/K -25** Versión especial – con refrigerador aceite-agua
- 51** Versión – con calefacción de baño de aceite, codificador de nivel y termostato
- 54** Versión especial – con perforación de salida de aceite adicional
- 58** Versión especial (ventilador)
- U 4.100 F** Versión especial – sin refrigerador
- U 4.100 F/K -25** Versión especial – con refrigerador aceite-agua
- 51** Versión – con calefacción de baño de aceite, codificador de nivel y termostato
- 58** Versión especial (ventilador)

Para posiciones que derivan del aparato standard véase apéndice (lado trasero del plano) 



SERVICE ?






standard

U 4.100 F/K

U 4.100 SA/K

optional
en option
opcionale
opcional

| optional en option optionale opcional  | Variante(n) Modifications Variantes | Pos ³⁾ | Bestell Nr. / Ident No. / No. Identification / No. Identificazione / No. De pedido | | Beschreibung / Description / Designation / Designazione / Desripcion |
|----------------------------------------------------------------------------------------------------------------------------------|-------------------------------------------|-------------------------------------------------------------------------------------------------------------------|----------------------------------------------------------------------------------------------------------------------------------------------------------------------|----------------------------------------------------------------------------------------------------------------------------------------------------------------------------------------------------------------------------------------------------------|----------------------------------------------------------------------------------------------------------------------------------------------------------------------------------------------------------------------------------------------------------------------------------------------------------------------------------------------------------------------------------------------------------------------------------------------------------------------------------------------------------------------------------------------------------------------------------------------------------------------------------------------------------------------------------------------------------------------------------------------------------------------------------------------------------------------------------------------------------------------------------------------------------------------------------------------------------------------------------------------------------------------------------------------------------------------------------------------------------------------------------------------------------------------------------------------------------------------------------------------------------|
| | | |  |  | |
| U 4.100 SA/XX U 4.100 F/XX | U 4.100 F | 141 144 146 157 158 159 160 192 193 | 012203 26200 912305 00000 | 012211-26200 960202-26200 012210-26200 948402-00000 XXX 945318-00000 949203-00000 | LEITUNG / PIPE / TUYAU / CONDOTTO / CONDUCTO LEITUNG / PIPE / TUYAU / CONDOTTO / CONDUCTO VERSCHLUSS-SCHRAUBE / LOCKING SCREW / BOUCHON / VITE DI CHIUSURA / TORNILLO DE CIERRE KUEHLER / COOLER / REFRROIDISSEUR / RAFFREDDATORE / REFRIGERADOR LEITUNG / PIPE / TUYAU / CONDOTTO / CONDUCTO HOHLSCHRAUBE / HOLLOW SCREW / VIS CREUSE / VITE ESAGONALE / TORNILLO HUECO DICHTUNG / GASKET / JOINT / GUARNIZIONE / JUNTA SCHRAUBE / SCREW / VIS / VITE / TORNILLO U-SCHEIBE / WASHER / RONDELLE / RONDELLA / ARANDELA |
| | U 4.100 SA/K-25 U 4.100 F/K-25 | 29 30 31 32 33 98 141 150 155 157 158 181 192 193 197 198 211 | 912871 00000 012214 26200 012213 26200 948420 00000 960204 26200 012212 26200 018301 26200 741302 00000 945634 00000 967300 10000 | 951705-00000 902300-26200 947713-00000 901808-00000 947507-00000 012211-26200 012209-26200 960202-26200 012210-26200 018300-26200 945318-00000 949203-00000 741310-60000 948086 00000 002409 26200 | FEDERSCHEIBE / SPRING DISC / DISQUE DE RESSORT / DISCO A MOLLA / ARANDELA ELÁSTICA VENTILATOR / FAN / VENTILATEUR / VENTILATORE / ALETA DE VENTILADOR PASSFEDER / KEY / CLAVETTE / CHIAVETTA / LENGÜETA DE AJUSTE WELLENENDSCHRAUBE / SHAFT END BOLD / VIS BOUT D'ARBRE / VITE DI CHIUSURA ALBERO / TORNILLO TERMINAL DE ÁRBOL U-SCHEIBE / WASHER / RONDELLE / RONDELLA / ARANDELA VERSCHLUSSSCHRAUBE / LOCKING SCREW / BOUCHON / VITE DI CHIUSURA / TORNILLO DE CIERRE LEITUNG / PIPE / TUYAU / CONDOTTO / CONDUCTO LEITUNG / PIPE / TUYAU / CONDOTTO / CONDUCTO HOHLSCHRAUBE / HOLLOW SCREW / VIS CREUSE / VITE ESAGONALE / TORNILLO HUECO KUEHLER / COOLER / REFRROIDISSEUR / RAFFREDDATORE / REFRIGERADOR LEITUNG / PIPE / TUYAU / CONDOTTO / CONDUCTO HAUBE / PROTECTING HOOD / CARTER PROTECTEUR / CARTER DI PROTEZIONE / SOMBRERETE SCHRAUBE / SCREW / VIS / VITE / TORNILLO U-SCHEIBE / WASHER / RONDELLE / RONDELLA / ARANDELA GUMMIPUFFER / RUBBER BUFFER / AMORTISSEUR EN CAOUTCHOUC / AMMORTIZZATORE IN GOMMA / AMORTIGUADOR DE GOMA GEWINDESTIFT / THREADED PIN / GOUPILLE FILETEE / SPINA FILETTATURA / VARILLA ROSCADA L-VERSCHRAUBUNG / L-PIECE / L-PIECE / PEZZO A L / ATORNILLADURA |
| | U 4.100 SA/K-51 U 4.100 F/K-51 | 282 283 301 304 305 309 315 316 319 | 741103 99682 948086 00000 002409 26200 948011 00000 912314 00000 960203 26200 943400 70000 948070 00000 | 002407-26200 951221-00100 | NIVEAUGEBER / LEVEL TRANSMITTER / CAPTEUR DE NIVEAU / INDICATORE DI LIVELLO / CODIFICADOR DE NIVEL DICHTUNG / GASKET / JOINT / GUARNIZIONI / ANILLO ÖLABSCHEIDERGEHÄUSE / HOUSING FOR OIL SEPARATION / CARCASSE POUR SEPARATION D'HUILLE / CARCASSA SEPARATORE OLIO / CARCASA SEPARADORA DE ACEITE VERSCHLUSS-SCHRAUBE / LOCKING SCREW / BOUCHON / VITE DI CHIUSURA / TORNILLO DE CIERRE DICHTUNG / GASKET / JOINT / GUARNIZIONE / JUNTA ANSCHLUSSSCHRAUBE / CONNECTION SCREW / VIS DE RACCORDEMENT / VITE DI RACCORDO / TORNILLO DE EMPALME ROHRHEIZKÖRPER / PIPE HEATER / CORPS DE CHAUFFE / SCALDIGLIA / CALEFACTOR TUBULAR TEMPERATUR-WÄCHTER / THERMOSTAT / THERMOSTAT / INTERRUPTORE TERMICO / TERMOSTATO DICHTUNG / GASKET / JOINT / GUARNIZIONE / JUNTA |
| | U 4.100 SA/K-54 | 301 307 | 002408 26200 951220 00100 | 002407-26200 | ÖLABSCHEIDERGEHÄUSE / HOUSING FOR OIL SEPARATION / CARCASSE POUR SEPARATION D'HUILLE / CARCASSA SEPARATORE OLIO / CARCASA SEPARADORA DE ACEITE VERSCHLUSS-SCHRAUBE / LOCKING SCREW / BOUCHON / VITE DI CHIUSURA / TORNILLO DE CIERRE |
| | U 4.100 F/K-58 U 4.100 SA/K-58 | 29 30 32 33 | 502302 10700 901804 00000 949454 00000 | 951705-00000 902300-26200 901804-00000 947507-00000 | FEDERSCHEIBE / LOCKING WASHER / RONDELLE À RESSORT / RONDELLA A MOLLA / ARANDELA DE RESORTE VENTILATOR / FAN / VENTILATEUR / VENTILATORE / VENTILADOR WELLENENDSCHRAUBE / SCREW / VIS / VITE / TORNILLO U-SCHEIBE / WASHER / RONDELLE / RONDELLA / ARANDELA |

³⁾ variantenabhängige Bauteile / variant-dependent components / composants variante-dependantes / componenti variante-dispendenti / componentes variante-dependientes